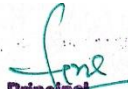


STUDENT SATISFACTION SURVEY

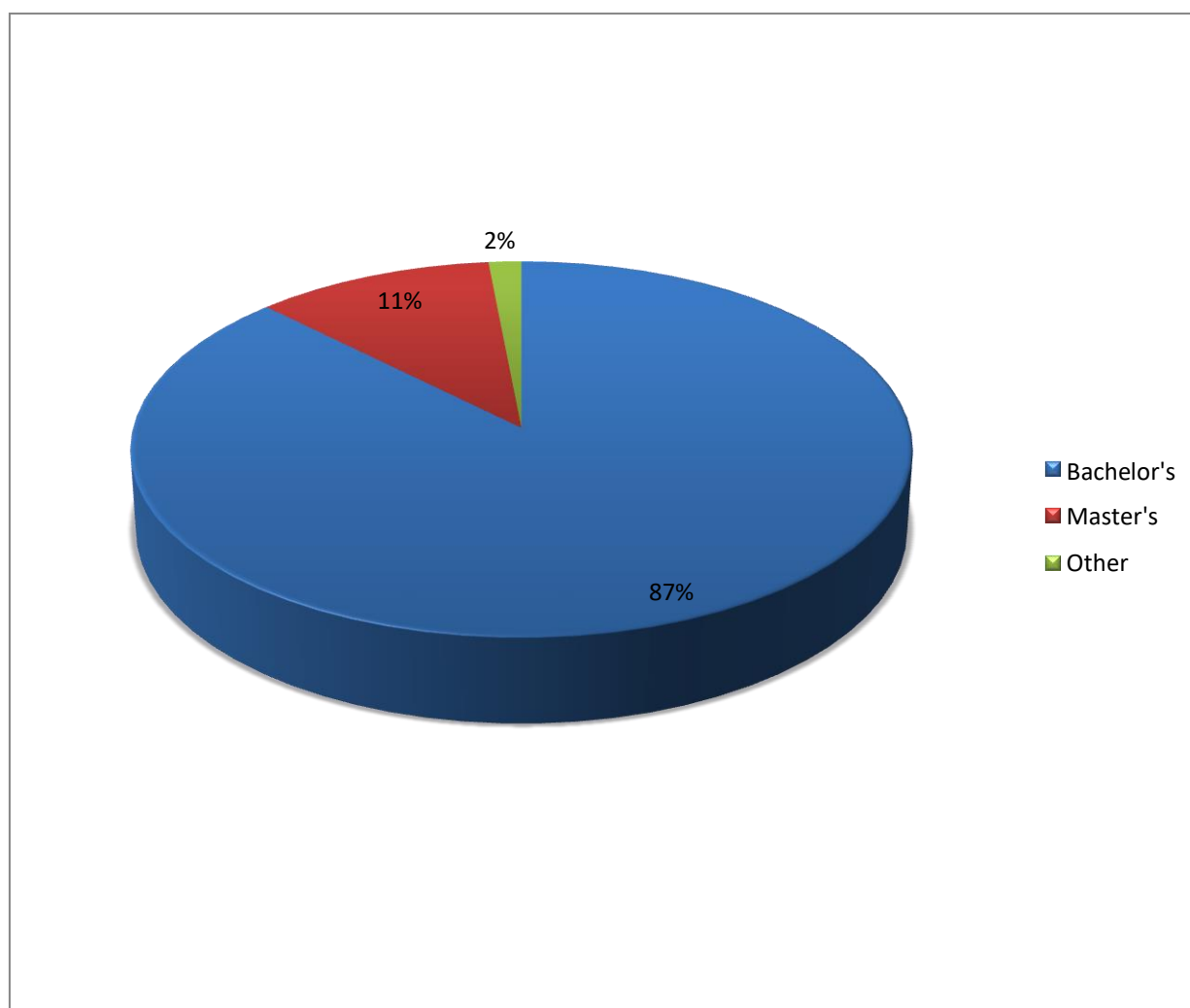
S.D. College for Women, Moga

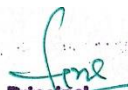
Total Number of responses = 199


Principal
S.D.College for Women
Moga

What Degree program are you pursuing now?

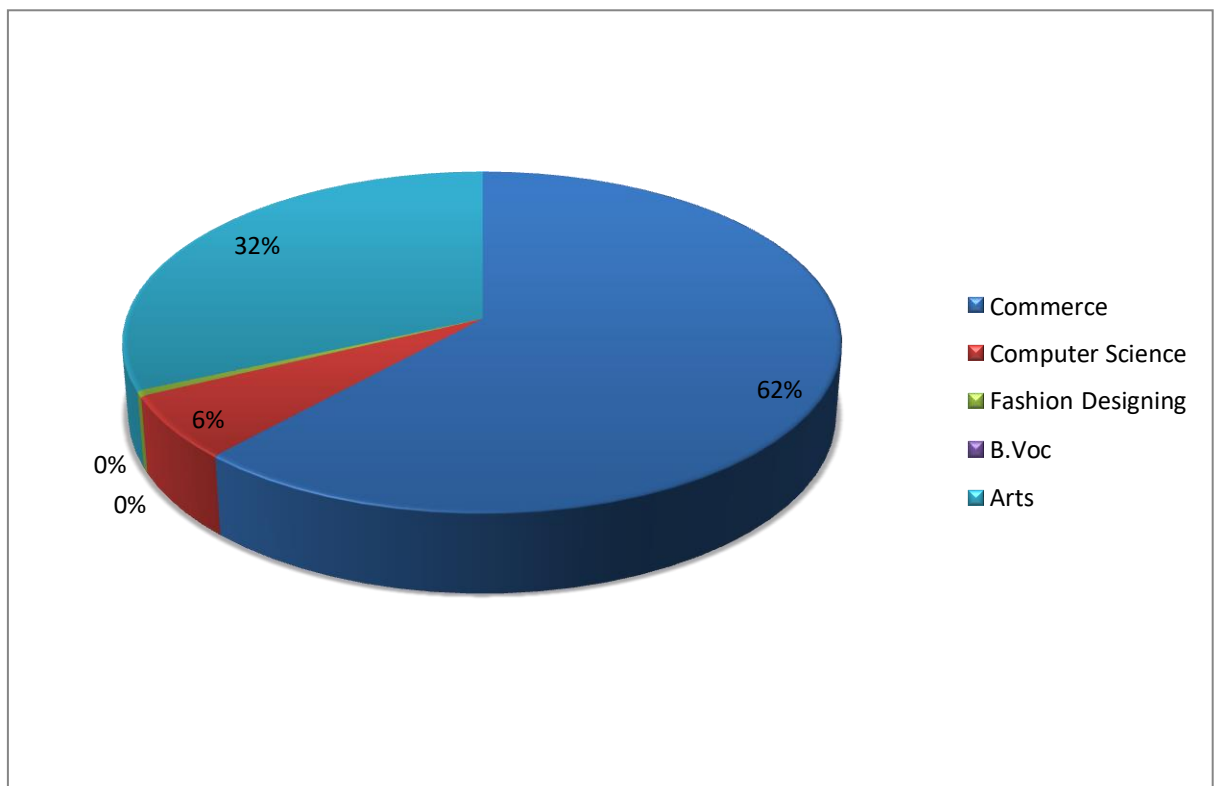
| Degree | Bachelor's | Master's | other |
|-----------------|------------|----------|-------|
| No. of students | 174 | 22 | 3 |
| Percentage | 87% | 11% | 2% |





Principal
S.D.College for Women
Moga

What subject area are you currently pursuing?

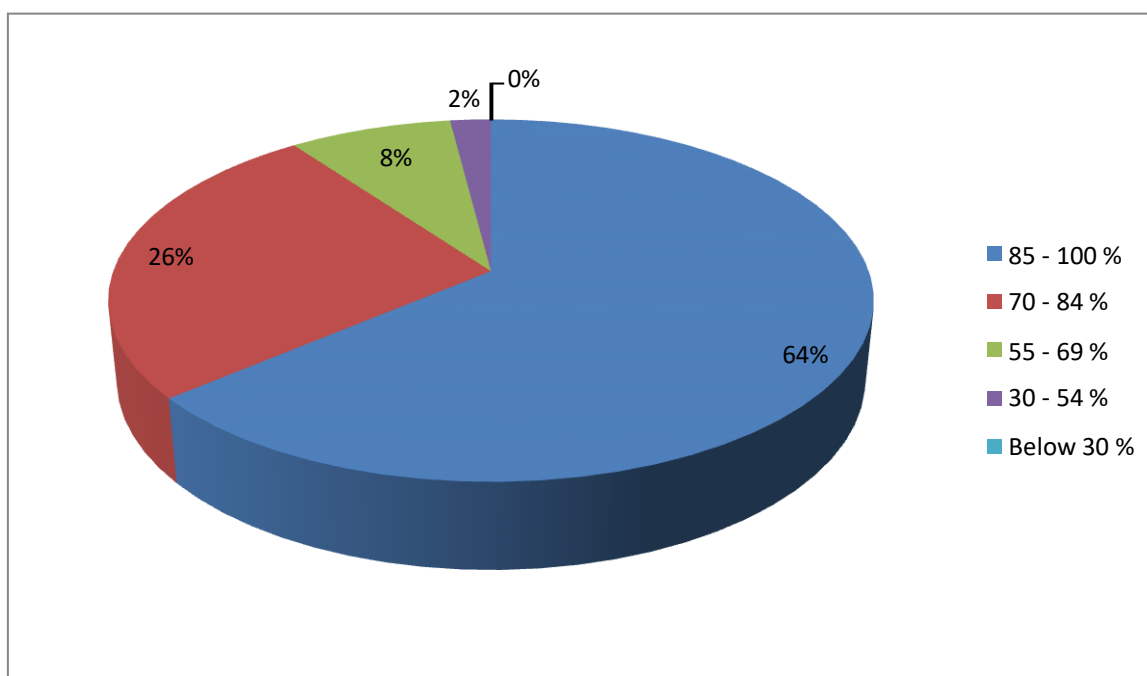
| Stream | Arts | Commerce | B.Voc | Fashion Designing | Computer Science |
|-----------------|------|----------|-------|-------------------|------------------|
| No. of students | 63 | 123 | 00 | 01 | 12 |
| Percentage | 32% | 62% | 0 | 0 | 6% |

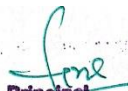



Principal
S.D.College for Women
Moga

1. How much of the syllabus was covered in the class ?

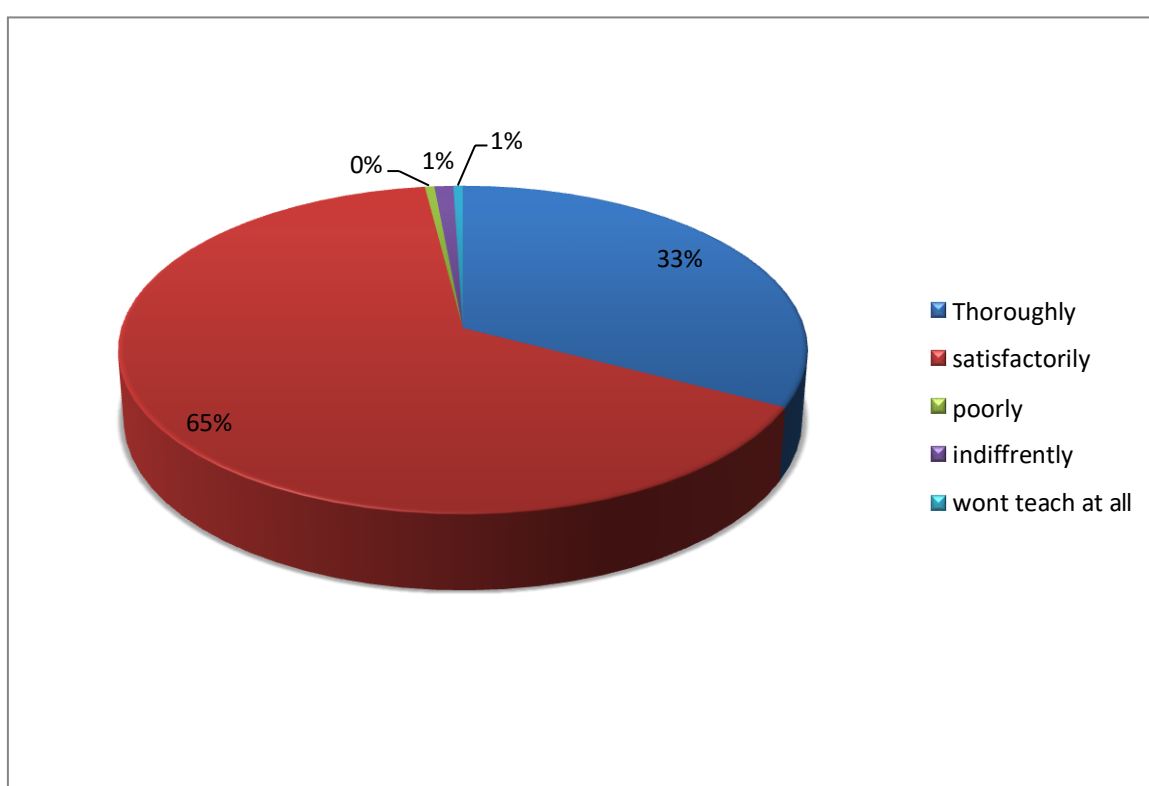
| Scale | 4 | 3 | 2 | 1 | 0 |
|-----------------|------------|-----------|-----------|-----------|------------|
| Criteria | 85 – 100 % | 70 – 84 % | 55 – 69 % | 30 – 54 % | Below 30 % |
| No. of students | 127 | 52 | 16 | 4 | 0 |
| Percentage | 64% | 26% | 8% | 2% | 0% |





Principal
S.D.College for Women
Moga

2. How well did the teachers prepare for the classes?

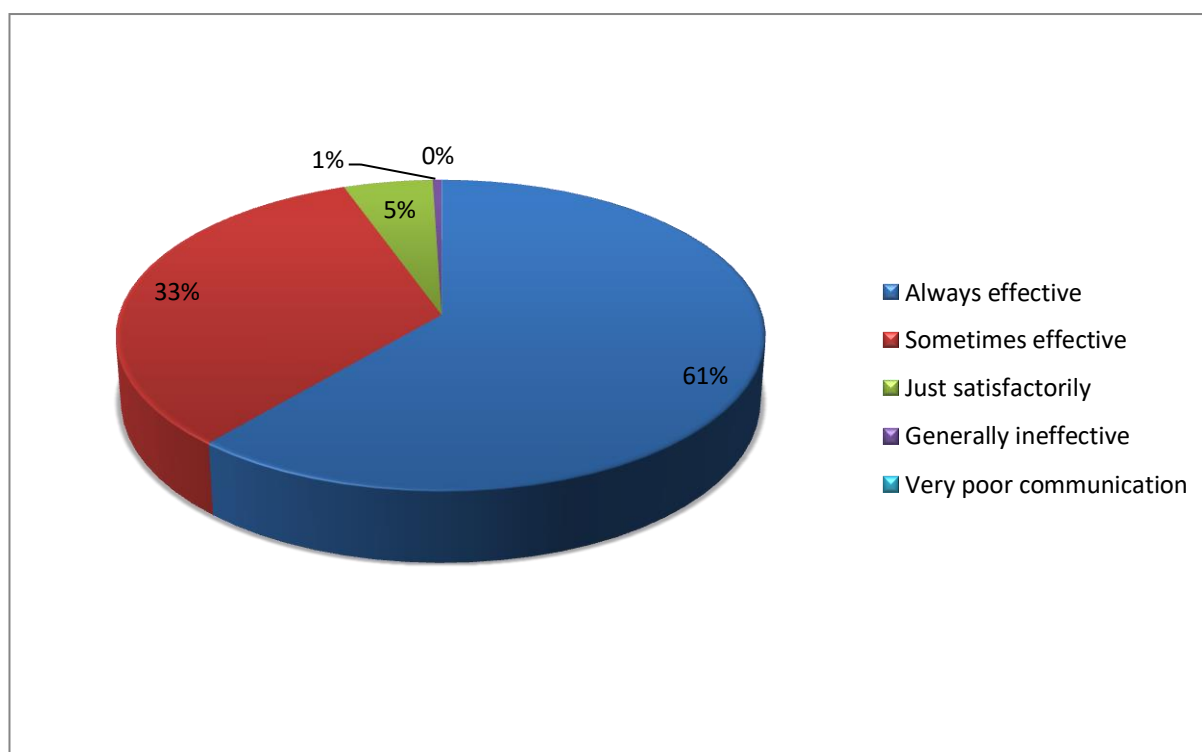
| Scale | 4 | 3 | 2 | 1 | 0 |
|------------------|------------|----------------|--------|---------------|--------------------|
| Criteria | Thoroughly | Satisfactorily | Poorly | Indifferently | Won't Teach At All |
| No. of responses | 65 | 130 | 1 | 2 | 1 |
| Percentage | 33% | 65% | 0 | 1% | 1% |





Principal
S.D.College for Women
Moga

3. How well were the teachers able to communicate?

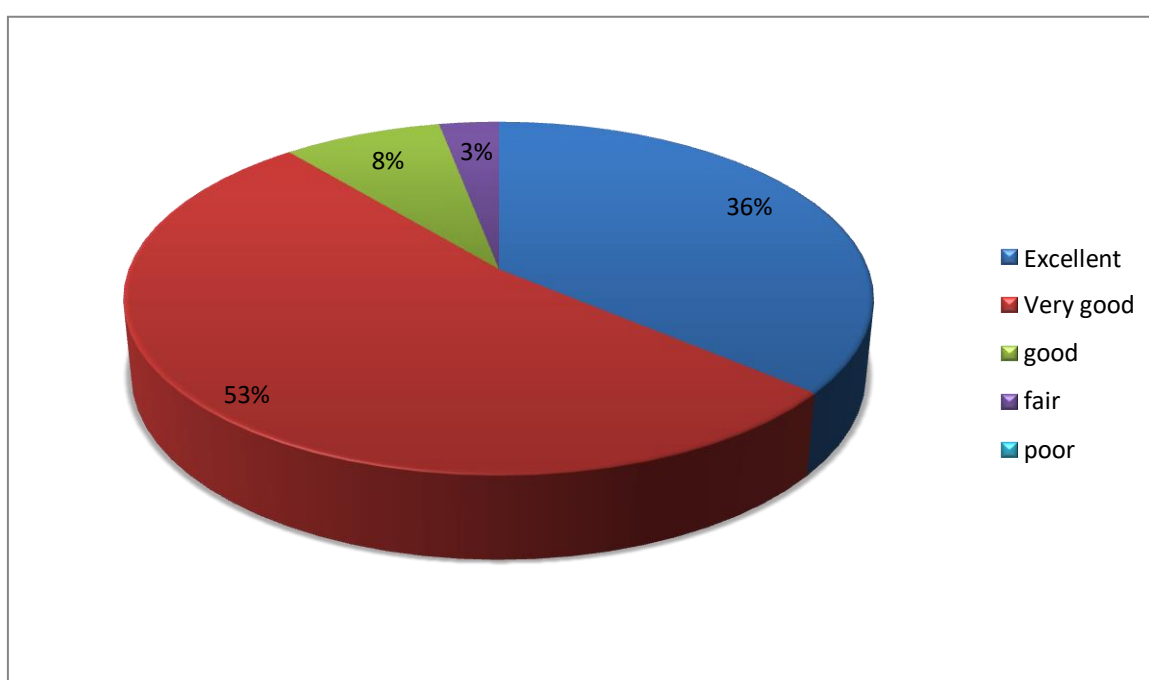
| Scale | 4 | 3 | 2 | 1 | 0 |
|------------------|------------------|---------------------|---------------------|-----------------------|-------------------------|
| Criteria | Always Effective | Sometimes Effective | Just Satisfactorily | Generally Ineffective | Very Poor Communication |
| No. Of Responses | 122 | 66 | 10 | 1 | 0 |
| Percentage | 61% | 33% | 5% | 1% | 0 |





Principal
S.D.College for Women
Moga

4. The teachers approach to teaching can best be described as

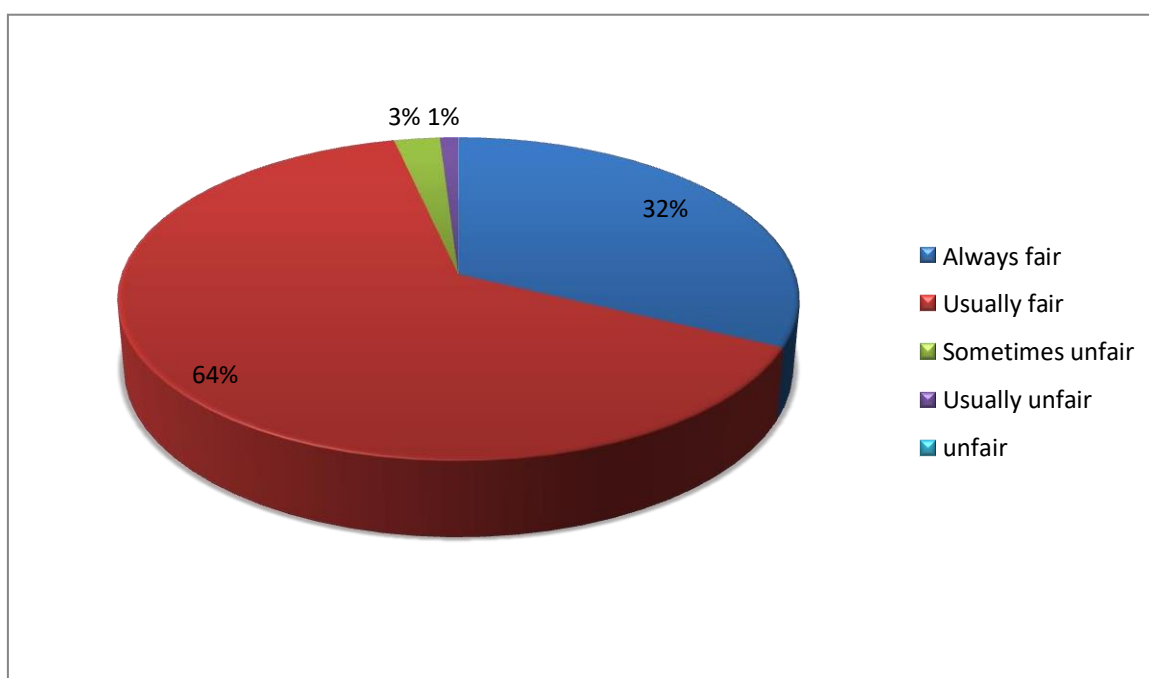
| Scale | 4 | 3 | 2 | 1 | 0 |
|------------------|-----------|-----------|------|------|------|
| Criteria | Excellent | Very Good | Good | Fair | Poor |
| No. Of Responses | 72 | 105 | 16 | 6 | 0 |
| Percentage | 36% | 53% | 8% | 3% | 0 |

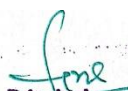



Principal
S.D.College for Women
Moga

5. Fairness of the internal evaluation process by the teachers?

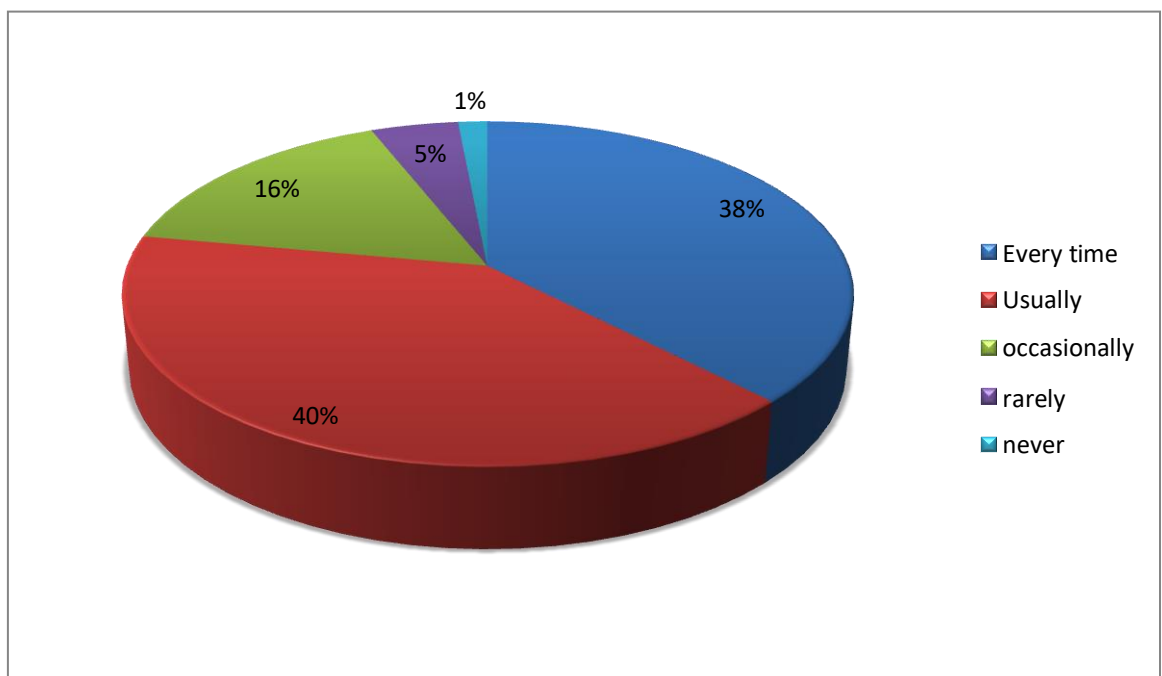
| Scale | 4 | 3 | 2 | 1 | 0 |
|------------------|-------------|--------------|------------------|----------------|--------|
| Criteria | Always Fair | Usually Fair | Sometimes Unfair | Usually Unfair | Unfair |
| No. Of Responses | 64 | 128 | 5 | 2 | 0 |
| Percentage | 32% | 64% | 3% | 1% | 0 |





Principal
S.D.College for Women
Moga

6. Was your performance in assignments discussed with you?

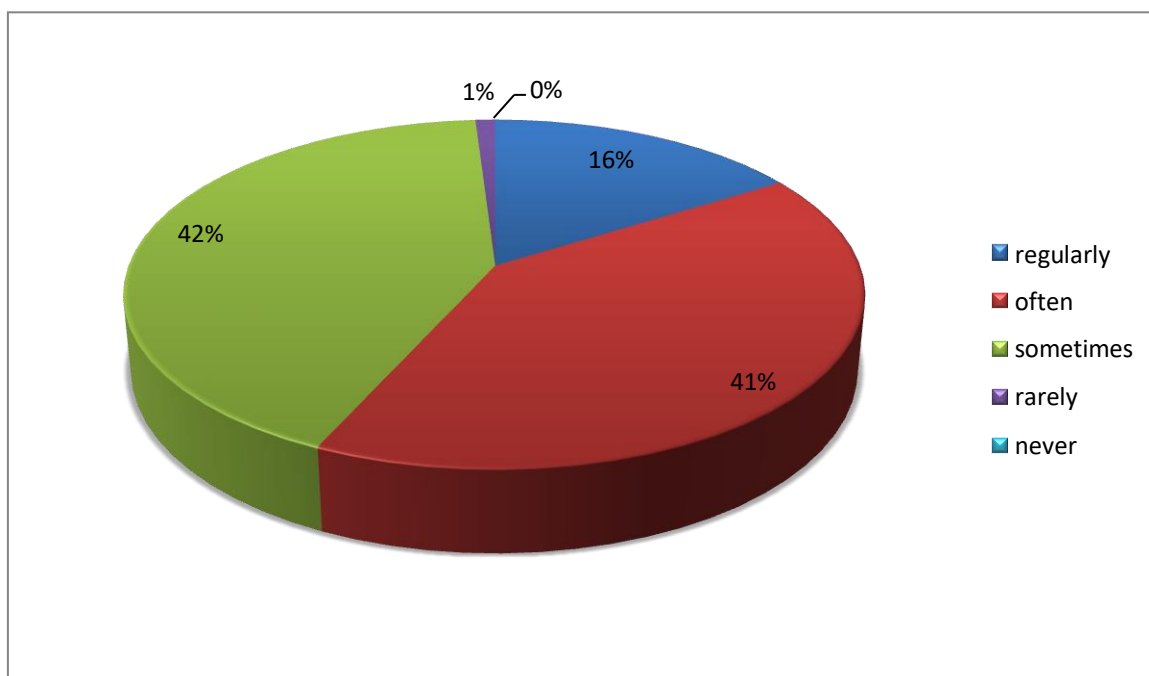
| Scale | 4 | 3 | 2 | 1 | 0 |
|------------------|------------|---------|--------------|--------|-------|
| Criteria | Every Time | Usually | Occasionally | Rarely | Never |
| No. Of Responses | 75 | 80 | 32 | 9 | 3 |
| Percentage | 38% | 40% | 16% | 5% | 1% |




Principal
S.D.College for Women
Moga

7. The institute takes active interest in promoting internship, students exchange and field visit opportunities for students.

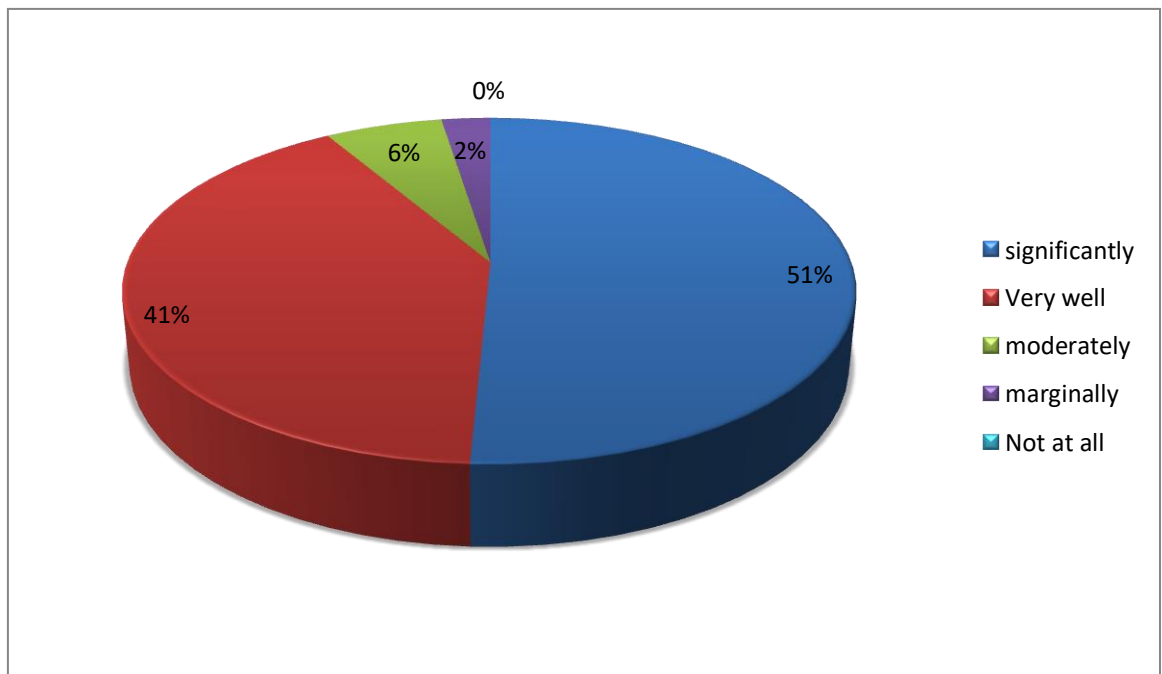
| Scale | 4 | 3 | 2 | 1 | 0 |
|------------------|-----------|-------|-----------|--------|-------|
| Criteria | Regularly | Often | Sometimes | Rarely | Never |
| No. Of Responses | 32 | 81 | 84 | 2 | 0 |
| Percentage | 16% | 41% | 42% | 1% | 0 |



[Signature]
Principal
S.D.College for Women
Moga

8. The teaching and mentoring process in your institution facilitates you in cognitive, social and emotional growth.

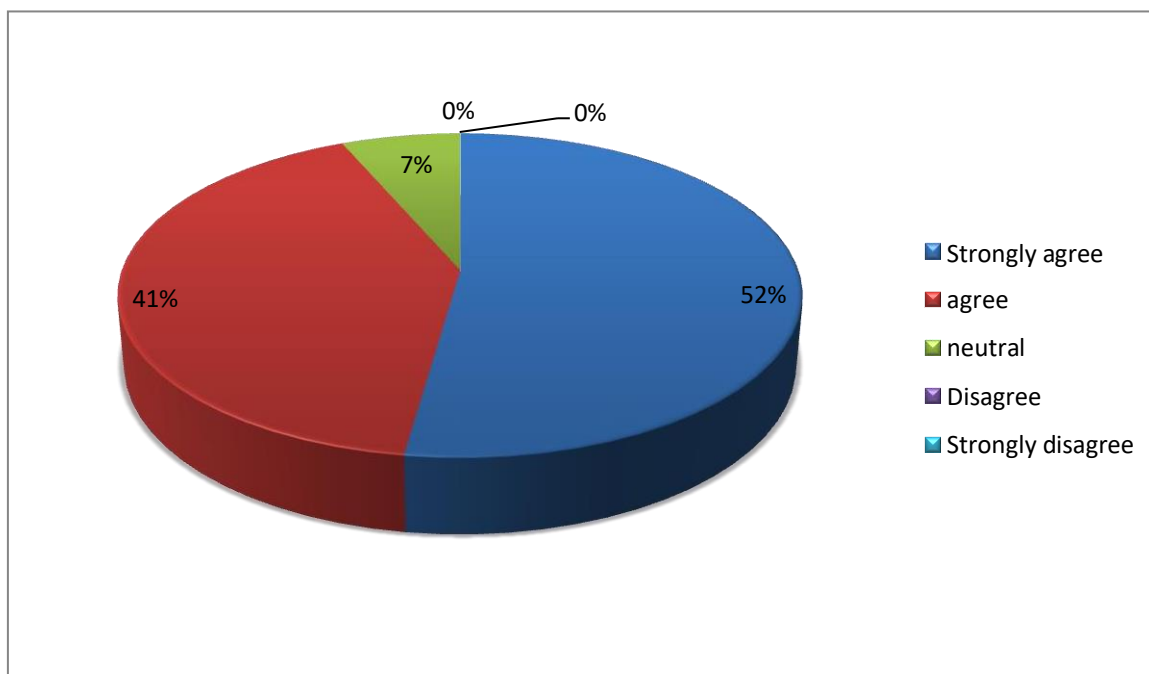
| Scale | 4 | 3 | 2 | 1 | 0 |
|------------------|---------------|-----------|------------|------------|------------|
| Criteria | Significantly | Very Well | Moderately | Marginally | Not At All |
| No. Of Responses | 101 | 81 | 12 | 5 | 0 |
| Percentage | 51 % | 41% | 6% | 2% | 0 |



fine
Principal
S.D.College for Women
Moga

9. The institution provides multiple opportunities to learn and grow.

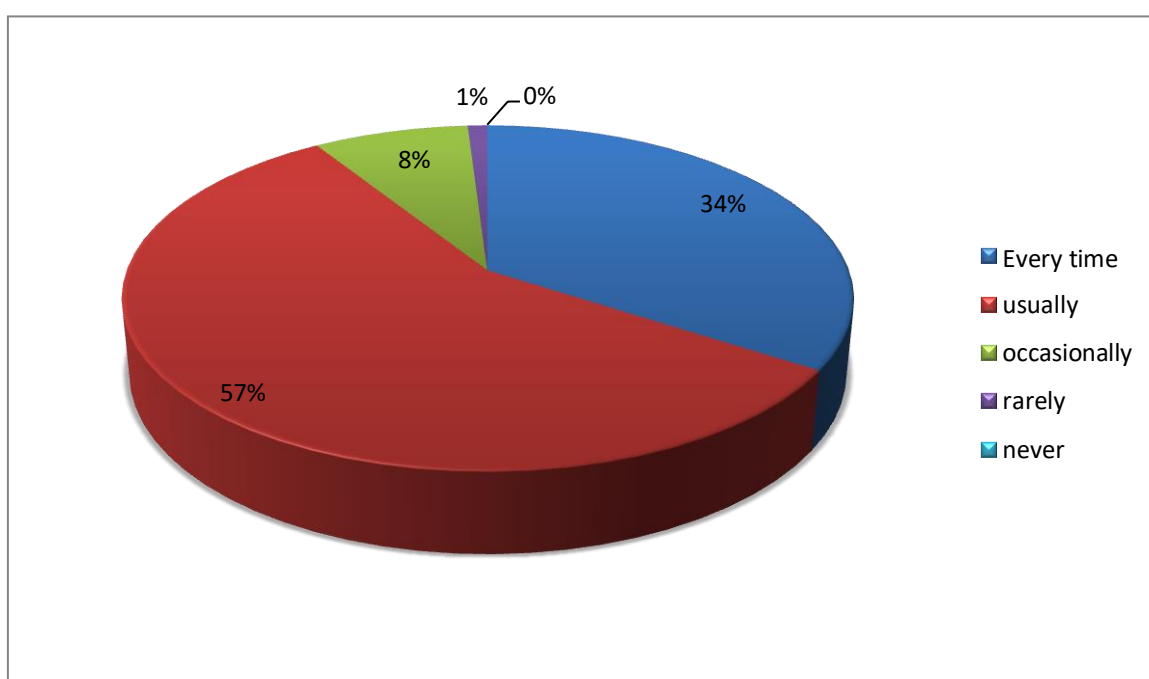
| Scale | 4 | 3 | 2 | 1 | 0 |
|------------------|----------------|-------|---------|----------|-------------------|
| Criteria | Strongly Agree | Agree | Neutral | Disagree | Strongly Disagree |
| No. Of Responses | 104 | 82 | 13 | 0 | 0 |
| Percentage | 52% | 41% | 7% | 0 | 0 |



[Signature]
Principal
S.D.College for Women
Moga

10. Teachers inform you about your expected competencies, course outcomes and program outcomes.

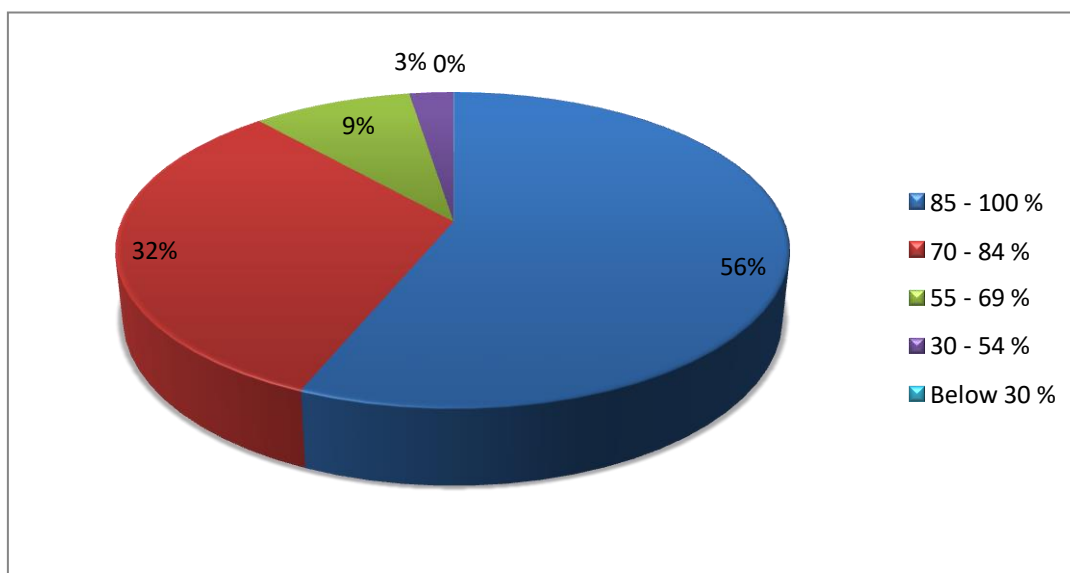
| Scale | 4 | 3 | 2 | 1 | 0 |
|------------------|------------|---------|--------------|--------|-------|
| Criteria | Every Time | Usually | Occasionally | Rarely | Never |
| No. Of Responses | 68 | 113 | 16 | 2 | 0 |
| Percentage | 34% | 57% | 8% | 1% | 0 |



[Signature]
Principal
S.D.College for Women
Moga

11. Your mentor does a necessary follow-up with an assigned task to you.

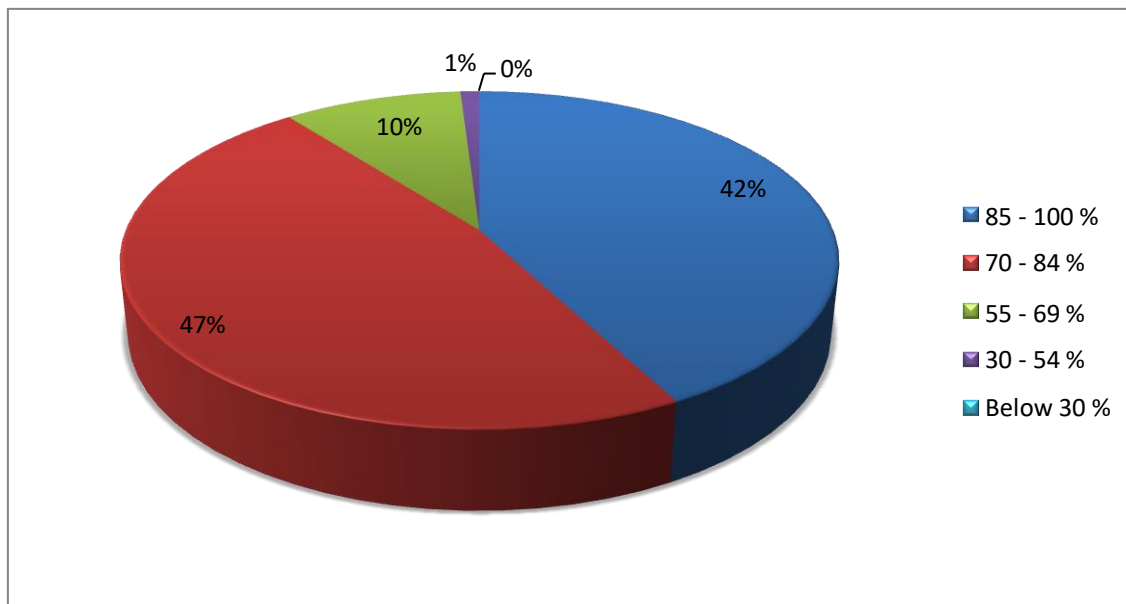
| Scale | 4 | 3 | 2 | 1 | 0 |
|-----------------|------------|-----------|-----------|-----------|------------|
| Criteria | 85 – 100 % | 70 – 84 % | 55 – 69 % | 30 – 54 % | Below 30 % |
| No. of students | 112 | 64 | 18 | 05 | 0 |
| Percentage | 56% | 32% | 9% | 3% | 0% |



Principle
Principal
S.D.College for Women
Moga

12. The teachers illustrate the concepts through examples and applications.

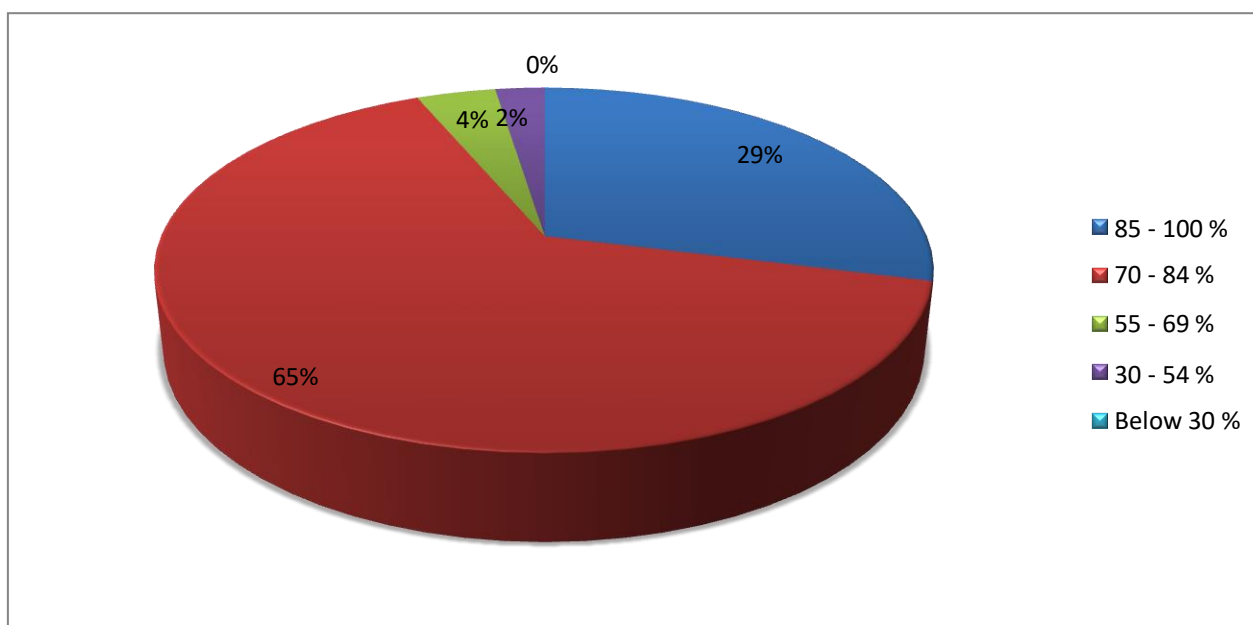
| Scale | 4 | 3 | 2 | 1 | 0 |
|-----------------|------------|-----------|-----------|-----------|------------|
| Criteria | 85 – 100 % | 70 – 84 % | 55 – 69 % | 30 – 54 % | Below 30 % |
| No. of students | 84 | 94 | 19 | 02 | 0 |
| Percentage | 42% | 47% | 10% | 1% | 0% |



for
Principal
S.D.College for Women
Moga

13. The teachers identify your strengths and encourage you with providing right level of challenges.

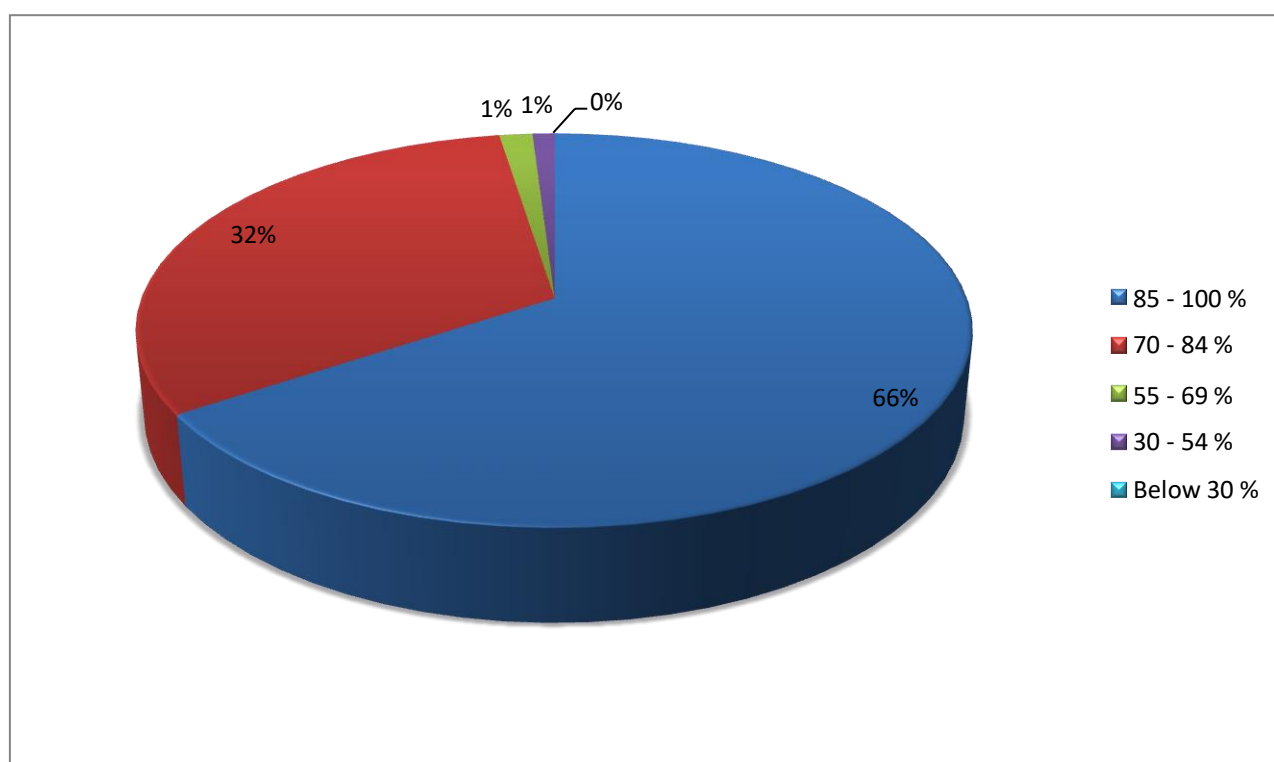
| Scale | 4 | 3 | 2 | 1 | 0 |
|-----------------|------------|-----------|-----------|-----------|------------|
| Criteria | 85 – 100 % | 70 – 84 % | 55 – 69 % | 30 – 54 % | Below 30 % |
| No. of students | 59 | 132 | 8 | 0 | 0 |
| Percentage | 29% | 65% | 4% | 2% | 0% |



[Signature]
Principal
S.D.College for Women
Moga

14. Teachers are able to identify your weaknesses and help you to overcome them.

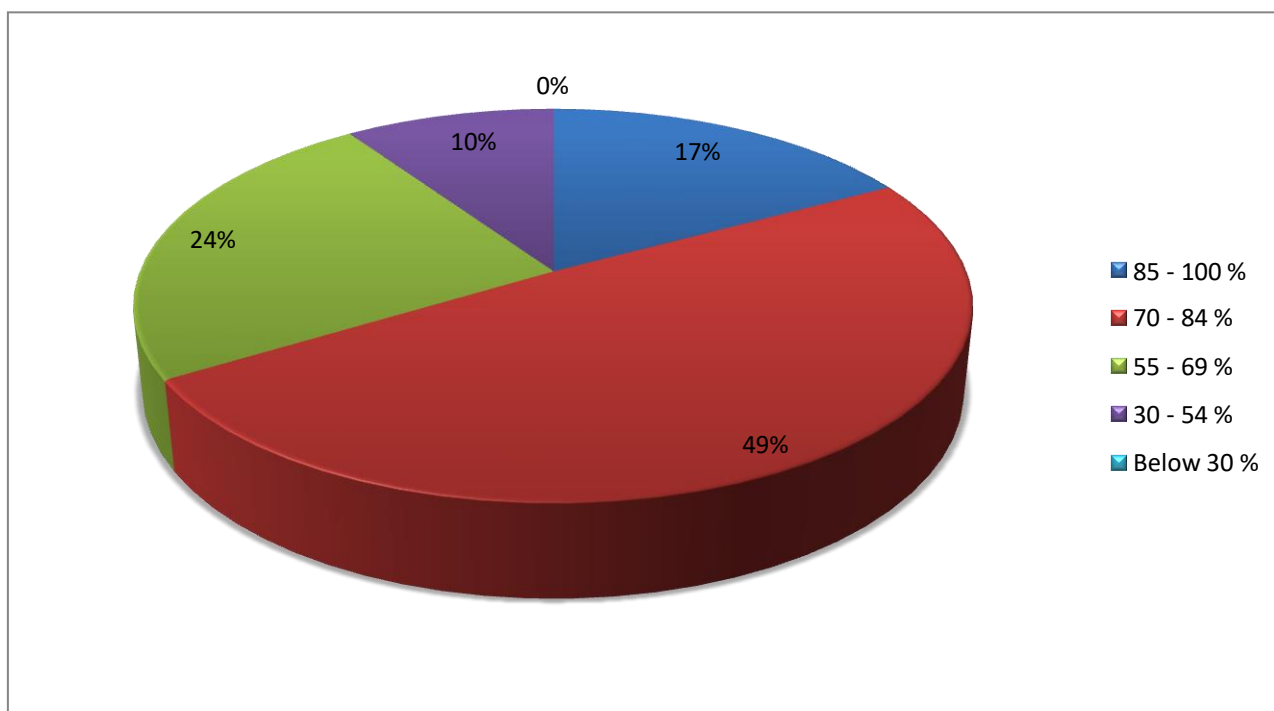
| Scale | 4 | 3 | 2 | 1 | 0 |
|-----------------|------------|-----------|-----------|-----------|------------|
| Criteria | 85 – 100 % | 70 – 84 % | 55 – 69 % | 30 – 54 % | Below 30 % |
| No. of students | 132 | 62 | 03 | 0 | 0 |
| Percentage | 66% | 32% | 1% | 1% | 0% |



Principal
Principal
S.D.College for Women
Moga

15. The institution makes effort to engage students in the monitoring, review and continues quality improvement of the teaching learning process.

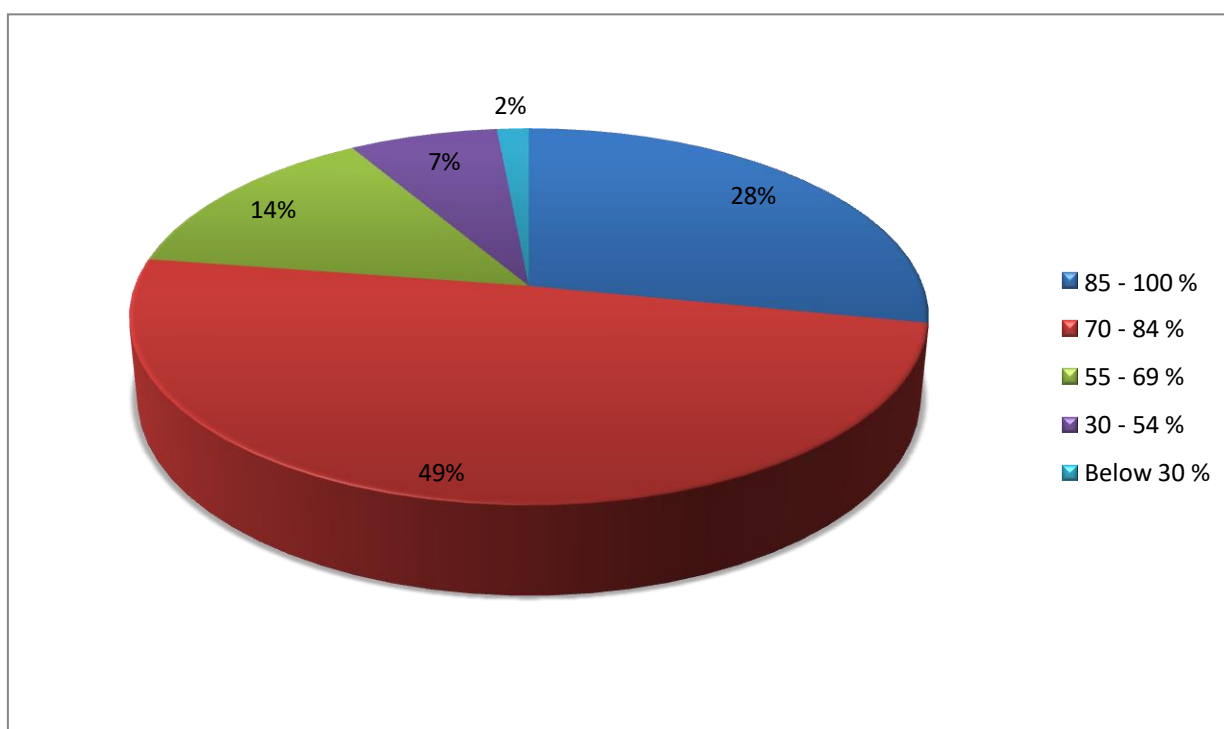
| Scale | 4 | 3 | 2 | 1 | 0 |
|-----------------|------------|-----------|-----------|-----------|------------|
| Criteria | 85 – 100 % | 70 – 84 % | 55 – 69 % | 30 – 54 % | Below 30 % |
| No. of students | 34 | 98 | 48 | 19 | 0 |
| Percentage | 17% | 49% | 24% | 10% | 0% |



[Signature]
Principal
S.D.College for Women
Moga

16. The institute/teachers use student's centric methods, such as experimental learning, participative learning and problem solving methodologies for enhancing learning experiences.

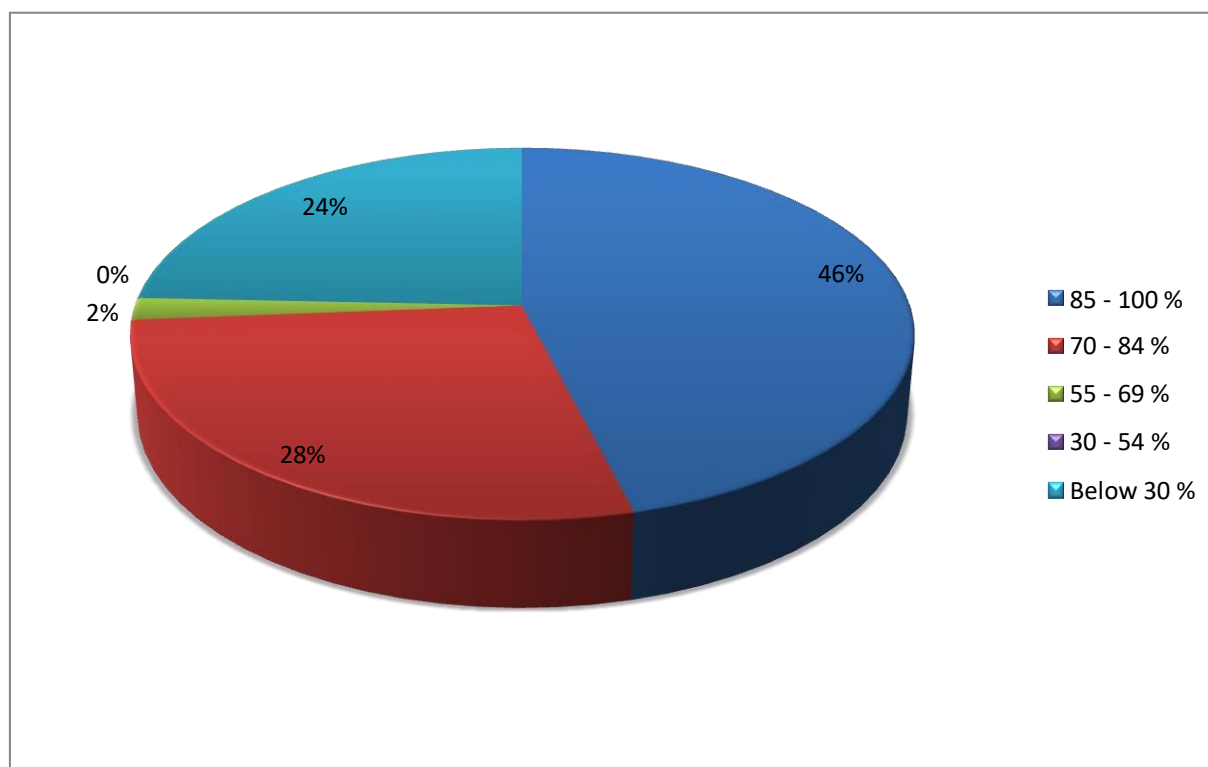
| Scale | 4 | 3 | 2 | 1 | 0 |
|-----------------|------------|-----------|-----------|-----------|------------|
| Criteria | 85 – 100 % | 70 – 84 % | 55 – 69 % | 30 – 54 % | Below 30 % |
| No. of students | 56 | 98 | 28 | 14 | 03 |
| Percentage | 28% | 49% | 14% | 7% | 2% |



fine
Principal
S.D.College for Women
Moga

17. Teachers encourage you to participate in extracurricular activities.

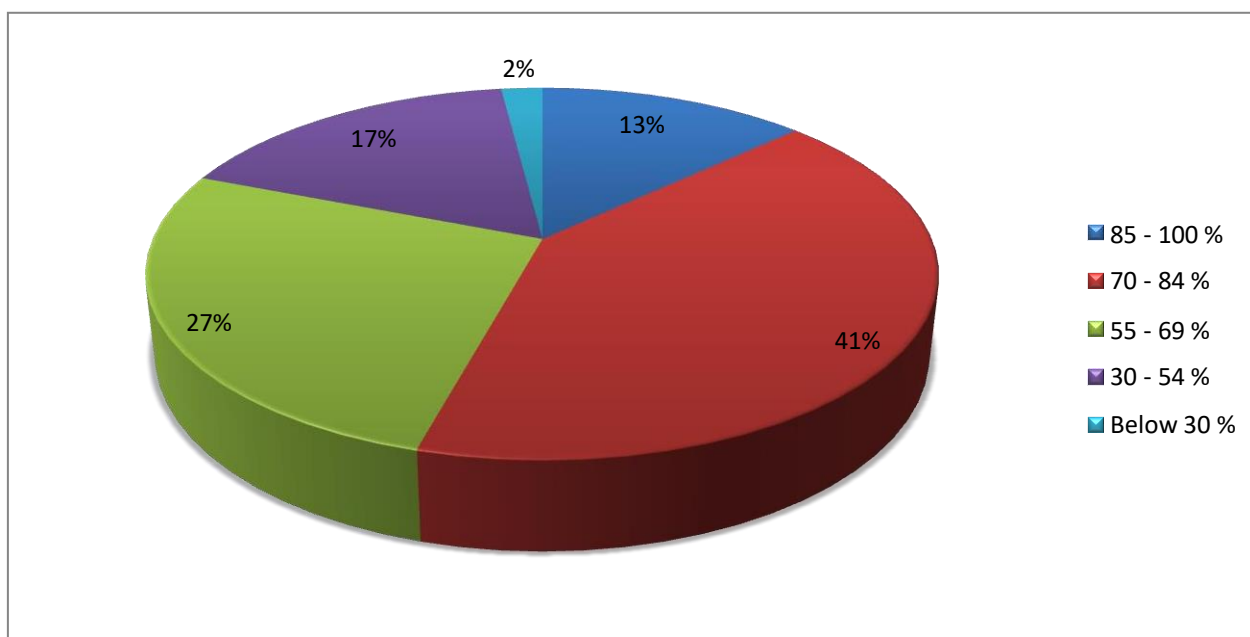
| Scale | 4 | 3 | 2 | 1 | 0 |
|-----------------|------------|-----------|-----------|-----------|------------|
| Criteria | 85 – 100 % | 70 – 84 % | 55 – 69 % | 30 – 54 % | Below 30 % |
| No. of students | 121 | 73 | 05 | 0 | 0 |
| Percentage | 46% | 28% | 2% | 24% | 0% |



fine
Principal
S.D.College for Women
Moga

18. Efforts are made by the institute /teachers to inculcate soft skills, life skills and employability skills to make you ready for the world of work.

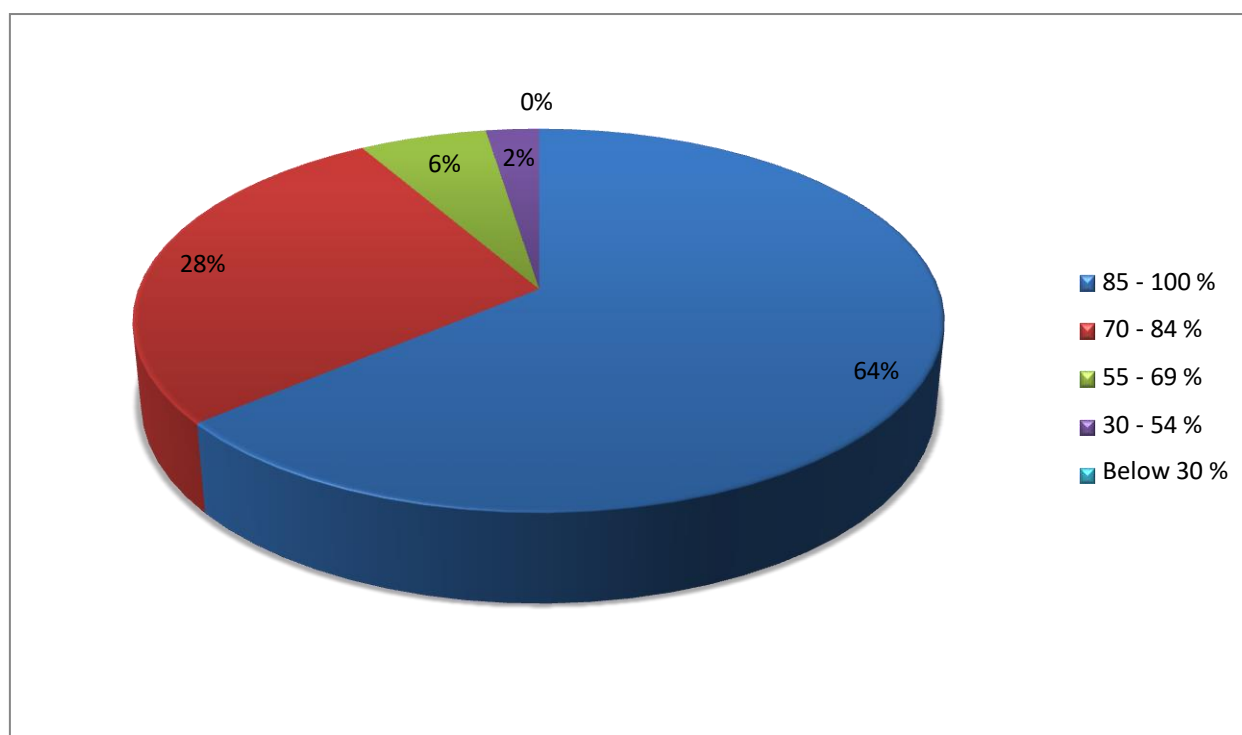
| Scale | 4 | 3 | 2 | 1 | 0 |
|-----------------|------------|-----------|-----------|-----------|------------|
| Criteria | 85 – 100 % | 70 – 84 % | 55 – 69 % | 30 – 54 % | Below 30 % |
| No. of students | 26 | 82 | 53 | 34 | 4 |
| Percentage | 13% | 41% | 27% | 17% | 2% |



Principal
Principal
S.D.College for Women
Moga

19. What percentage of teachers uses ICT tools such as LCD projector, multimedia, etc? While teaching.

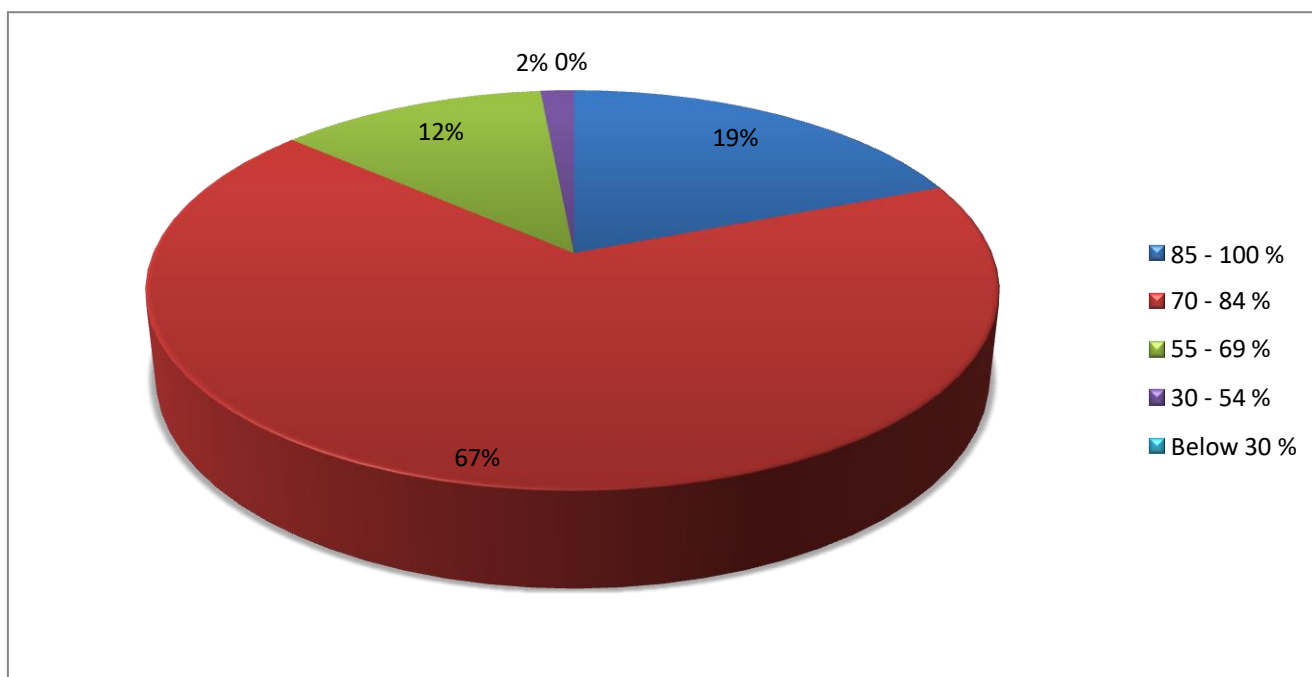
| Scale | 4 | 3 | 2 | 1 | 0 |
|-----------------|------------|-----------|-----------|-----------|------------|
| Criteria | 85 – 100 % | 70 – 84 % | 55 – 69 % | 30 – 54 % | Below 30 % |
| No. of students | 129 | 56 | 12 | 01 | 1 |
| Percentage | 64% | 28% | 6% | 2% | 0% |



fine
Principal
S.D.College for Women
Moga

20. The overall quality of teaching-learning process in your institute is very good.


| Scale | 4 | 3 | 2 | 1 | 0 |
|-----------------|------------|-----------|-----------|-----------|------------|
| Criteria | 85 – 100 % | 70 – 84 % | 55 – 69 % | 30 – 54 % | Below 30 % |
| No. of students | 38 | 134 | 24 | 03 | 0 |
| Percentage | 19% | 67% | 12% | 2% | 0% |



[Signature]
Principal
S.D.College for Women
Moga

21. Suggestions from students

- There should be more emphasis on practical work
- Teachers should use ICT Tools more often
- The institute should conduct mock interviews to make students ready for the world of work
- Interactive session and class discussion should be held regularly
- Special emphasis on slow learners
- Outdoor visit and industrial trips should be organized
- Extra curriculum activities should be organized more frequently.


Principal
S.D.College for Women
Moga